

DISCOVER
SOUTH FLORIDA'S
MOST PRESTIGIOUS
NEW RESIDENCES

ONE | Sotheby's
INTERNATIONAL REALTY

2017 EXCLUSIVE DEVELOPMENT COLLECTION



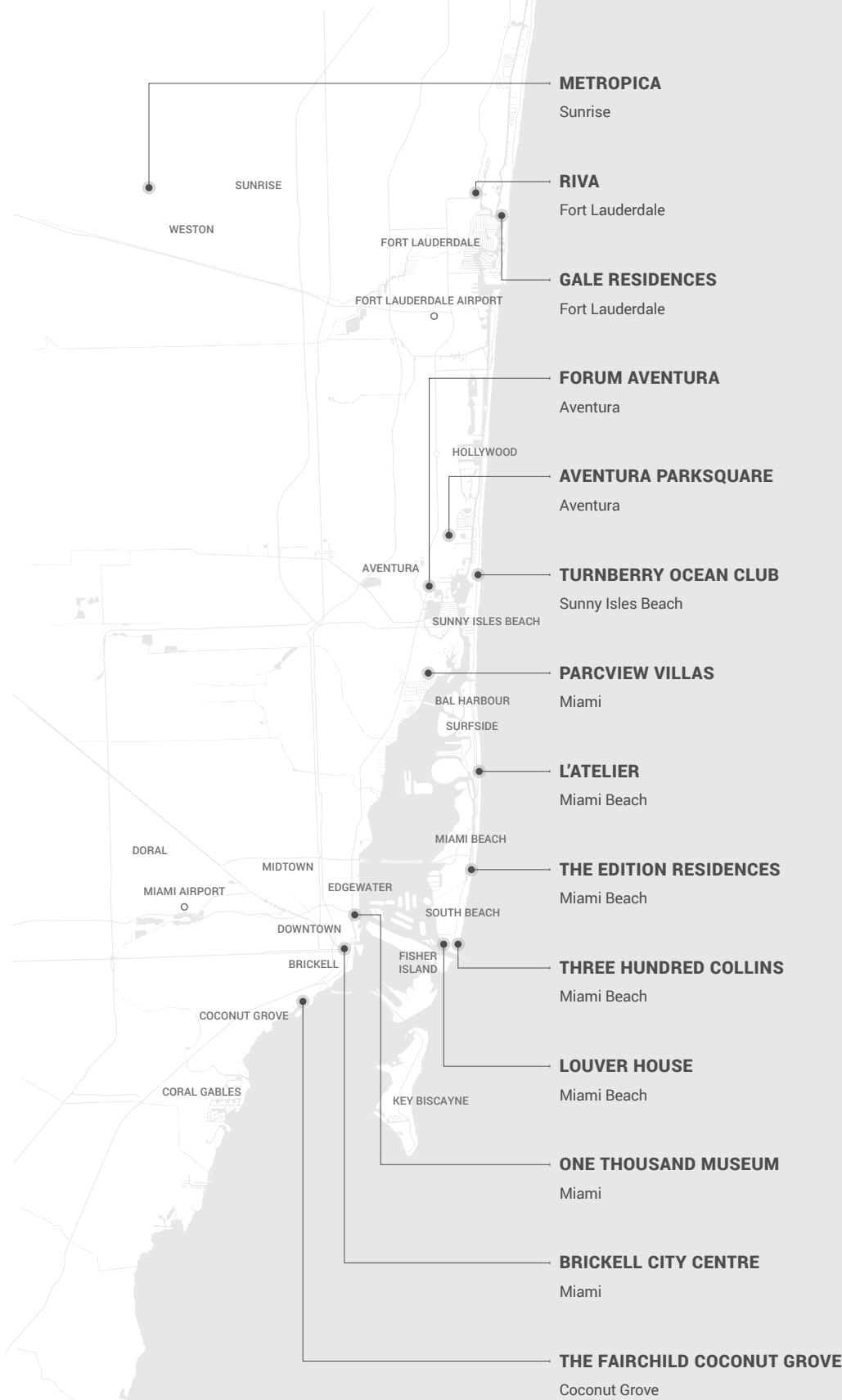
Originally British and now headquartered in New York City, Sotheby's is a pioneering business that offers the world's most discerning clientele the opportunity to sell or acquire the rarest, most exceptional treasures. With over 90 Sotheby's offices and 880 Sotheby's International Realty offices, the brand is widely considered one of the most interconnected, truly global networks in the world and is able to provide unmatched, white-glove service. The Sotheby's brands form an unwavering alliance, jointly committed as one of the most storied names in business.

ONE Sotheby's International Realty's Development Division currently represents over 14 pre-construction developments in Miami-Dade and Broward Counties. In its short existence, the branch has managed to break several pricing records and now handles over \$3.5 billion in real estate inventory. As a result of its dramatic growth, the Development Division continues to represent some of South Florida's most prestigious condo residences and is regarded as one of the top development sales and marketing firms in the city.

OUR EXCLUSIVE DEVELOPMENTS

BROWARD COUNTY

MIAMI-DADE COUNTY





TURNBERRY OCEAN CLUB SUNNY ISLES BEACH

154 RESIDENCES
3 TO 6 BEDROOMS
STARTING AT \$3.9M
TO BE COMPLETED IN 2019

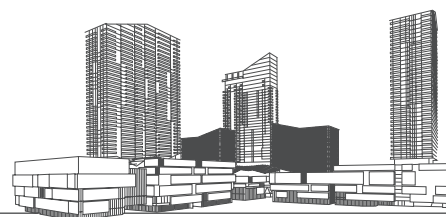
DEVELOPED BY TURNBERRY ASSOCIATES
DESIGNED BY CARLOS ZAPATA & ROBERT SWEDROE



ONE THOUSAND MUSEUM DOWNTOWN MIAMI

83 RESIDENCES
4 TO 6 BEDROOMS
STARTING AT \$5.5M
TO BE COMPLETED IN 2018

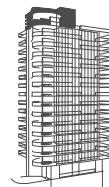
DEVELOPED BY GREGG COVIN & LOUIS BIRDMAN
DESIGNED BY ZAHA HADID ARCHITECTS



BRICKELL CITY CENTRE MIAMI

780 RESIDENCES
1 TO 3 BEDROOMS
STARTING AT \$595K
COMPLETED IN 2016

DEVELOPED BY SWIRE PROPERTIES
DESIGNED BY ARQUITECTONICA



L'ATELIER
MIAMI BEACH

25 RESIDENCES | 3 TO 6 BEDROOMS
STARTING AT \$3.5M | TO BE COMPLETED IN 2018

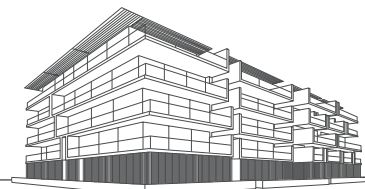
DEVELOPED BY SMG & W CAPITAL GROUP
DESIGNED BY LUIS REVUELTA & HOLLY HUNT



THE EDITION
MIAMI BEACH

26 RESIDENCES | 2 TO 3 BEDROOMS
STARTING AT \$3M | COMPLETED IN 2015

DEVELOPED BY IAN SCHRAGER
DESIGNED BY JOHN PAWSON



THREE HUNDRED COLLINS
MIAMI BEACH

19 RESIDENCES | 2 TO 4 BEDROOMS
STARTING AT \$2.3M | TO BE COMPLETED IN 2017

DEVELOPED BY MAST CAPITAL
DESIGNED BY RENE GONZALEZ



LOUVER HOUSE
MIAMI BEACH

12 RESIDENCES | 3 BEDROOMS
STARTING AT \$2.5M | TO BE COMPLETED IN 2017

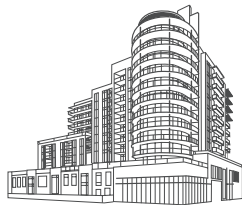
DEVELOPED BY JMH DEVELOPMENT
DESIGNED BY THOMAS JUUL-HANSEN



RIVA
FORT LAUDERDALE

100 RESIDENCES | 2 TO 3 BEDROOMS
STARTING AT \$750K | TO BE COMPLETED IN 2017

DEVELOPED BY PREMIER DEVELOPERS
DESIGNED BY FSMY



GALE RESIDENCES
FORT LAUDERDALE

129 RESIDENCES | 2 TO 3 BEDROOMS
STARTING AT \$799K | TO BE COMPLETED IN 2018

DEVELOPED BY NEWGARD
DESIGNED BY GARCIA STROMBERG



FORUM
AVENTURA

128 CONDO OFFICES | STARTING AT \$300K
DEVELOPED BY CK PRIVE GROUP, PRIVE LAND
BANKING, CK HOLDING GROUP AND H&M BUILDERS
DESIGNED BY ARQUITECTONICA

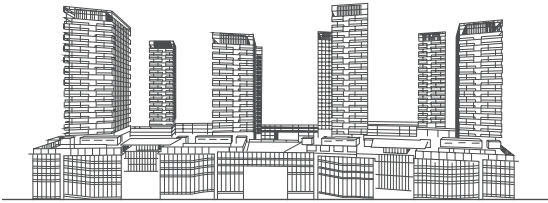


PARCVIEW VILLAS
MIAMI

18 RESIDENCES | 3 TO 4 BEDROOMS
STARTING AT \$560K | TO BE COMPLETED IN 2017

DEVELOPED BY ANDINA GROUP
DESIGNED BY IDEA ARCHITECTS

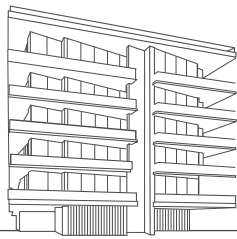




METROPICA SUNRISE

263 RESIDENCES
1 TO 3 BEDROOMS
STARTING AT \$380K
TO BE COMPLETED IN 2018

DEVELOPED BY TRILLIST & KGH INTL. DEVELOPMENT
DESIGNED BY OPPENHEIM ARCHITECTURE



THE FAIRCHILD COCONUT GROVE

26 RESIDENCES
2 TO 4 BEDROOMS
STARTING AT \$1.4M
TO BE COMPLETED IN 2018

DEVELOPED BY ROVR DEVELOPMENT
DESIGNED BY STRANG ARCHITECTURE



AVENTURA PARKSQUARE AVENTURA

131 RESIDENCES
1 TO 3 BEDROOMS
STARTING AT \$520K
TO BE COMPLETED IN 2018

DEVELOPED BY INTEGRA INVESTMENTS
DESIGNED BY ZYSCOVICH ARCHITECTS





ONESOTHEBYSREALTY.COM

DEVELOPMENTS@ONESOTHEBYSREALTY.COM

CORAL GABLES | BRICKELL | KEY BISCAYNE | MIAMI BEACH | BAY HARBOR ISLANDS

AVENTURA | SUNNY ISLES | FORT LAUDERDALE | WESTON

SOTHEBY'S INTERNATIONAL REALTY: A TRUE GLOBAL NETWORK

20,000 ASSOCIATES | 880 OFFICES | 70 COUNTRIES AND TERRITORIES WORLDWIDE